

Installation Manual on Continuous ink supply system (CISS) For EPSON 780790/830/900/830u/830/820/810

Thank you for using the “INKSYSTEM” Continuous ink supply system. It is the best device for an inkjet printer, and it will definitely decrease your printing costs. Before using this system, please read this manual carefully. The pictures in this manual may be different with the real ones. Here just for your reference.

Remarks: Some pictures maybe different from the real products, especially for the external ink tank, these pictures are just for reference, please handle according the real products.

I. Instruction

1. Accessories

1) Continuous ink supply system	1
2) Air Filter	1
3) Sponge	1
4) Injector	1
5) Long needle	1
6) Short needle	1
8) Installation Manual	1
9) Certificate on free installation.....	1



Pic. 1-1



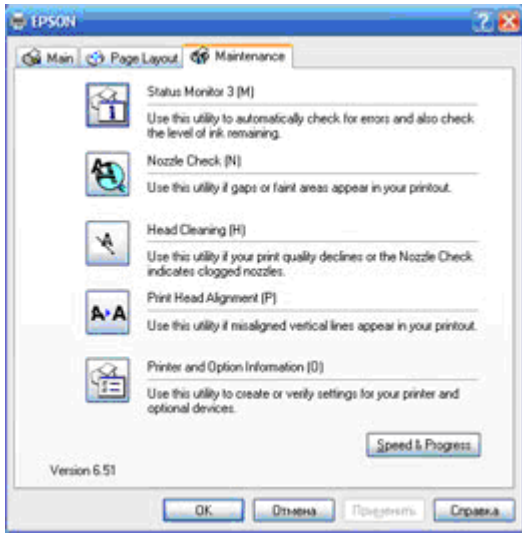
Pic. 1-2

2. Inspection before installation

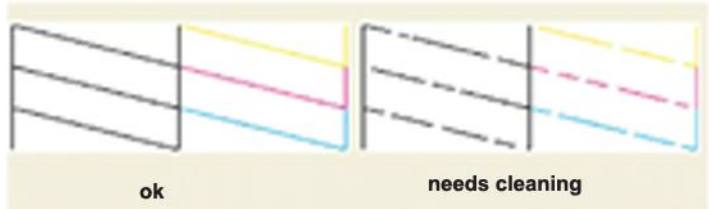
Check whether CISS is pulling out, if tube is disconnected.
Please contact local distributor if have found problems.

II. Test printer

1. Check whether printer conditions are normal.
2. Enter nozzle test option (2-1), print nozzle test sheet to see whether nozzle is normal (2-2, 2-3).



Pic. 2-1



Pic. 2-2, 2-3

3. If printer is alright, please print a picture to see the result.

III. Installation Procedures

1. Make the system ready

Place the system on the table, check if there is any ink in each of the air balance tube. If yes, you need to remove the ink in the balance tubes by the following steps:

- 1) Pull the sealed plug of the balance tube out (3-1-1).
- 2) Use the injector to draw all the ink out.
- 3) Put the sealed plug back.
- 4) Pull refill plug out.
- 5) Inject ink to the ink tanks according to their color.
- 6) Put refill plug back.
- 7) Check all the plugs to make sure they are completely sealed.



Pic. 3-1-1



Pic.3-1-2

2. Replace the air balance plugs

Put this system on the right side of printer, tidy up ink flow tubes, pull out an air balance plug and replace it with an air filter with the bigger side downwards. This is repeated for each air balance plug. Keep the air balance plugs for future use.

Move cartridge holder out

Press ink button (3-2-1). Move cartridge holder to the cartridge, changing position (3-2-2), pull the printer power off (3-2-3).



Pic. 3-2-1



Pic. 3-2-2



Pic. 3-2-3

3. Move out cartridge holder

Insert screwdriver like (3-3-1), screw screwdriver like (3-3-2) until take cartridge cover off (3-3-3).



Pic. 3-3-1



Pic. 3-3-2



Pic. 3-3-3

4. Install ink cartridges

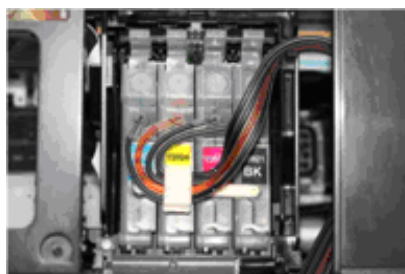
Take cartridges out (3-4-1). Install CISS cartridges according to printer indication and press cartridge down to the place (3-4-2, 3-4-3).



Pic. 3-4-1



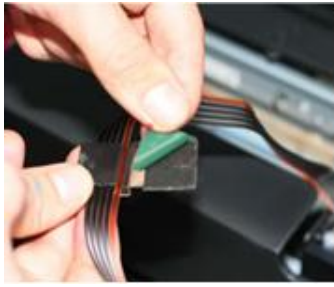
Pic. 3-4-2



Pic. 3-4-3

5. Fix place meter

Tear sponge seal off (3-5-1). Tidy up ink tube. Stick rack onto the printer cover like (3-5-2). Make sure that tube and rack will not fall off while printing. Do not twist ink tube (3-5-3).



Pic. 3-5-1



Pic. 3-5-2



Pic. 3-5-3

6. Check wire length

Move cartridge holder to left side (3-6-1), then to right side (3-6-2), check if the tube is too long or too short. Move cartridge holder to right side, check if ink tube will fall down during movement, if fall down, then the holder will be blocked during printing.



Pic. 3-6-1



Pic. 3-6-2

7. Adjust wire length

If step 6 is ok, then there is no need to go through this step.

If the tube length is too short then lengthen (3-7-1) it, if too long then shorten (3-7-2).

If the tube falls down, you need adjust the angle of sticker to prevent falling.



Pic. 3-7-1



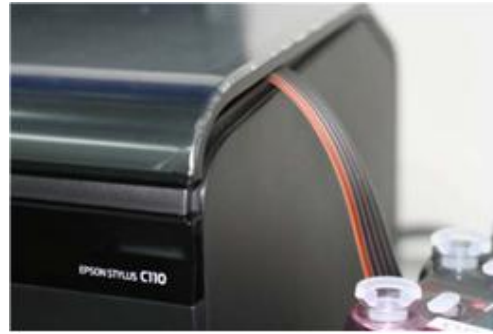
Pic.3-7-2

8. Take off place meter

Tidy up ink tube. Tear seal off, attach fixation like (3-8-2). Press ink tube while closing printer cover (3-8-3) to avoid deforming of ink tube.



Pic. 3-8-2



Pic.3-8-3

9. Prepare for print

Plug power wire on (3-9-1), turn printer on (3-9-2). Check whether printer and ink tube can run normally. Close printer cover and check whether it is strange noise while printing.



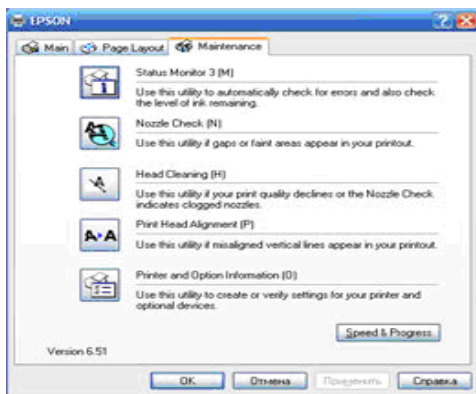
Pic. 3-9-1



Pic. 3-9-2

10. Check printer nozzle

Enter printer nozzle inspection option (3-10-1), print nozzle test sheet. If it is ok (3-10-2)), then can run printer. If line is missing (3-10-3), please clean the nozzle. If just one color is missing (maybe there is air in nozzle). If it is still a little line missing after several times cleaning, please turn printer off and let printer stay turned off for one hour or more. Please contact local distributor if still have problem.



Pic.3-10-1

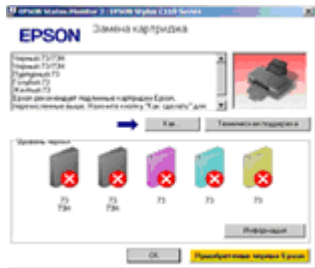


Pic. 3-10-2, 3-10-3

IV. Notice

It requires to change cartridges while printing (4-1-1) and ink light flash (4-1-2). Press ink button to move out cartridge holder. Press chip reset button for 3 seconds (4-1-3), repress ink button to move back cartridge holder, then ink amount shows 99% again. Redo nozzle inspection and printer can run normally if it is alright. (Black and other colors can be handled by the same method).

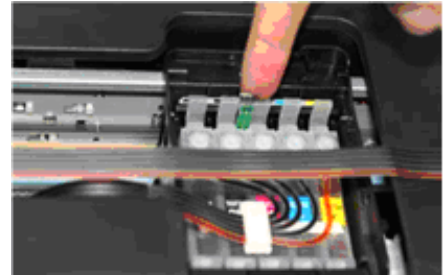
Note: Distinguish two kinds of chips (4-1-4). The manipulation is the same. The difference is that the chips with transferred switch should be switched downwards (4-1-5), otherwise, chips can not be recognized.



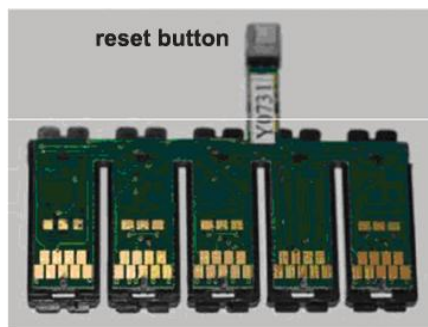
Pic. 4-1-1



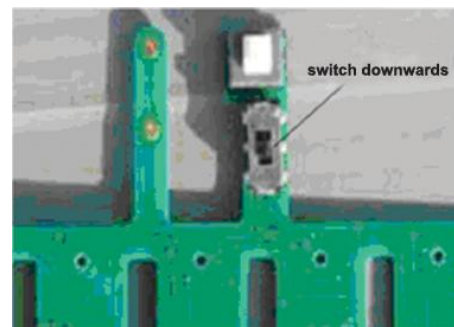
Pic. 4-1-2



Pic. 4-1-3



Pic. 4-1-4



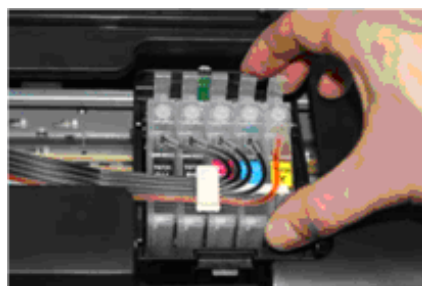
Pic. 4-1-5

V. Removing used continuous ink supply system

Replace air filters with air plugs (5-1-1). Move out cartridge holder and take the rack off. Take the cartridges out (5-1-2) and place the cartridges on the tissue with the ink flow nozzle downwards, and let the tissue at the same level with the system ink tank (5-1-3).



Pic. 5-1-1



Pic. 5-1-2



Pic. 5-1-3

VI. Refill ink

During printing, if you found out that the ink level in the tank is below the red line, please add ink according to the methods.

VII. Check air balance tube

During printing, if you find some abnormal cases, such as bad output, ink drip out on paper, then you need to check the air balance tube to see if exist ink. If yes, please do according to the manual of "ink pump out from balance tube".

VIII. Warnings

1. During printing, please do not take cartridges over than the printer. Please keep ink tank and printer in the same level.
2. During printing, do not inverse, lift up or lower ink tanks.
3. Please do not block up ink tanks for curiosity or for fear of less ink
4. Use CISS at clean environment and within the temperature range 15-35 degrees.

IX. Product Warranty

INKSYSTEM warrants its products to be free from defects in material or workmanship. Rarely the equipment partly or completely fails within the warranty period. In these cases we do everything possible to ensure that our customers are satisfied with the purchase.

The INKSYSTEM CISS installation is free in any of the representative offices.

The warranty repairs are done quickly, with good quality and for free. The warranty duration is 12 months from the date of retail sale. Every product has a Warranty Certificate. The transportation of the failed product is provided by its owner.

Please note that the ink and the photo paper are expendable materials and there can be no returning of unsealed ink tanks and photo paper packages. When defects are found by the service managers, a replacement for a new product is performed.

Please adhere to the following points to receive a warranty service as soon as possible:

When accepting the product check if the warranty certificate is filled in correctly.

- Keep the original receipt that contains the date of purchase information.
- Adhere to operating conditions that are provided in the User's Manual, or on the web-page of the specific product.
- Try to avoid mechanical damages when operating the product: chippings, dents, fractures, scratches, etc.

We cannot provide a warranty repair under several conditions:

- If the warranty certificate is wrongly filled in.
- If the device has mechanical damages: chippings, dents, fractures, scratches, etc.

